

Mobility



The trend towards higher energy costs, lower oil production and sustainable economic growth necessitates the need to provide better transportation plans that emphasize human mobility as the central focus. Whether this is achieved through principles of smart growth, traffic calming, universal access, or pedestrian and bike facility integration with vehicular streets, the technical challenges must be met. Our public streets are not just for motor vehicles, they should be complete streets for the entire community. KTU+A offers a proven track record of cost-effective, technically proficient, and creative approaches towards mobility that connects places, people, and resources.

Complete Streets
Circulation
Traffic Calming
Transit Plans
Transit Centers
Bikeways
Trails
Pedestrian Accessibility
Parking



3916 Normal Street
San Diego, CA 92103
619 294-4477
www.ktua.com



Project Leader:
John Holloway, ASLA
john@ktua.com

Complete Streets

- Camino del Mar, Del Mar
- C Street Master Plan, San Diego
- Main Street Promenade, Lemon Grove
- 8th Street Corridor Smart Growth Project, National City

Circulation

- City of Del Mar Circulation Element Update (Bikes, Peds, Trails), Del Mar

Traffic Calming

- Uptown Traffic Calming Plan (Fourth, Fifth, and Sixth Avenues), San Diego
- Imperial Beach Traffic Calming and Bikeway Study, Imperial Beach
- University Avenue North Park Traffic Calming Study, San Diego**



Proposed SDSU campus bikeway

Transit Plans

- Mid-City Bus Rapid Transit Plan, San Diego
- San Diego Trolley Mid-Coast Corridor Feasibility Study, San Diego
- San Diego State University to Downtown Bus Rapid Transit Study, San Diego
- San Diego Trolley Mission Valley East Patron Access Study, San Diego
- University Town Center Super Loop Transit Study, San Diego

Transit Centers

- University Town Center Transit Center Concept Studies, San Diego
- UCSD Gilman Drive Transit Center, La Jolla
- North County Transit Station Redevelopment Plans, Oceanside, Carlsbad and Escondido**
- Old Town Transit Center, San Diego
- Mission Valley Line Transit Centers, San Diego
- Mid-City Transit Gateway, San Diego
- Interstate 15 Interim Transit Centers, San Diego

Bikeways

- San Diego State University Bicycle and Skateboard Access Study, San Diego**
- City of Oceanside Bicycle Master Plan, Oceanside**
- Bayshore Bikeway, San Diego
- City of Carlsbad Bicycle Master Plan, Carlsbad
- City of Chula Vista Bicycle Master Plan, Chula Vista
- City of El Cajon Bicycle Master Plan, El Cajon
- City of Encinitas Bicycle Master Plan, Encinitas**
- Highway 101 Multi-Use Access Study, Encinitas
- City of Imperial Beach Bicycle Transportation Plan, Imperial Beach
- City of San Marcos Bicycle Master Plan, San Marcos
- City of Santee Bicycle Master Plan, Santee
- City of Temecula Bicycle and Multi-Use Trails Plan, Temecula



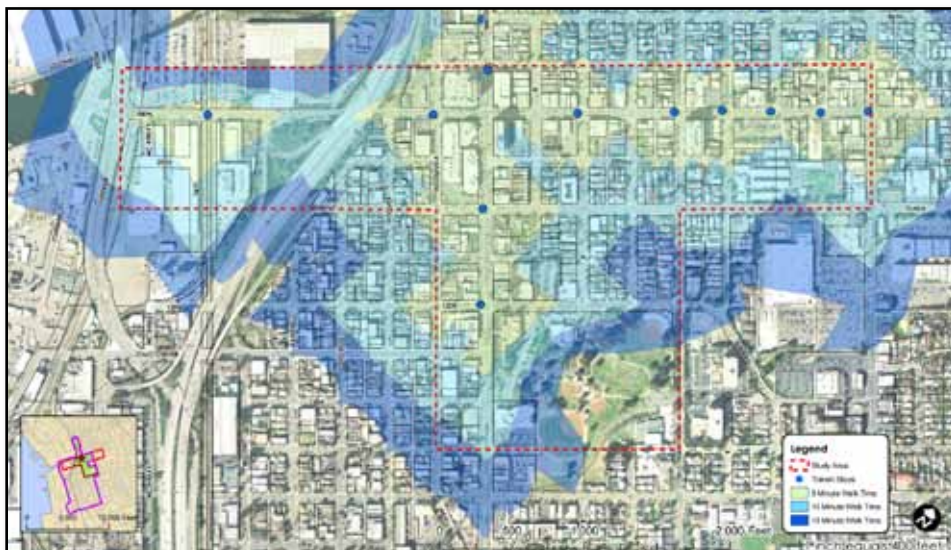
Mid-City Transit Gateway



Balboa Park Trail Mileage Markers

Trails

- Balboa Park Trails Mapping and Signage, San Diego
- Bernardo Mountain Trails Feasibility Study, San Diego
- Carmel Valley Trails, San Diego
- Encinitas Beach Access Trail, Encinitas
- Murrieta Creek Trail and Interpretive Signage, Temecula
- Roripaugh/Johnson Ranch Trails Master Plan, Temecula
- San Dieguito River Park Coast to Crest Trail, San Diego
- San Diego River Ocean Beach Trail Extension, San Diego
- San Diego River Trails Gap Analysis, San Diego
- Santa Ana River Trail, Phase 4, San Bernardino
- Sea World Trail, Mission Bay, San Diego
- Valley Center Heritage Trail, Valley Center



8th Street Corridor Walk Time Analysis, National City

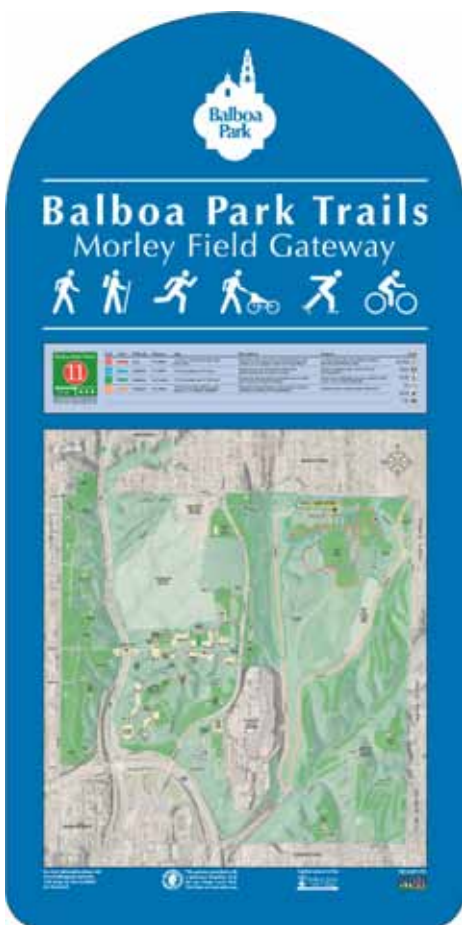
Pedestrian Accessibility

- City of Oceanside Pedestrian Master Plan, Oceanside**
- City of San Diego Pedestrian Master Plan, Phase 1, San Diego
- City of Carlsbad ADA Transition Plan, Carlsbad
- Cal State San Marcos ADA Accessibility and Wayfinding Study, San Marcos
- Oceanfront Walk Safety Study, Mission Beach, San Diego
- District 3 Sidewalk Study, San Diego
- Ocean Beach Gateway, Robb Field, San Diego

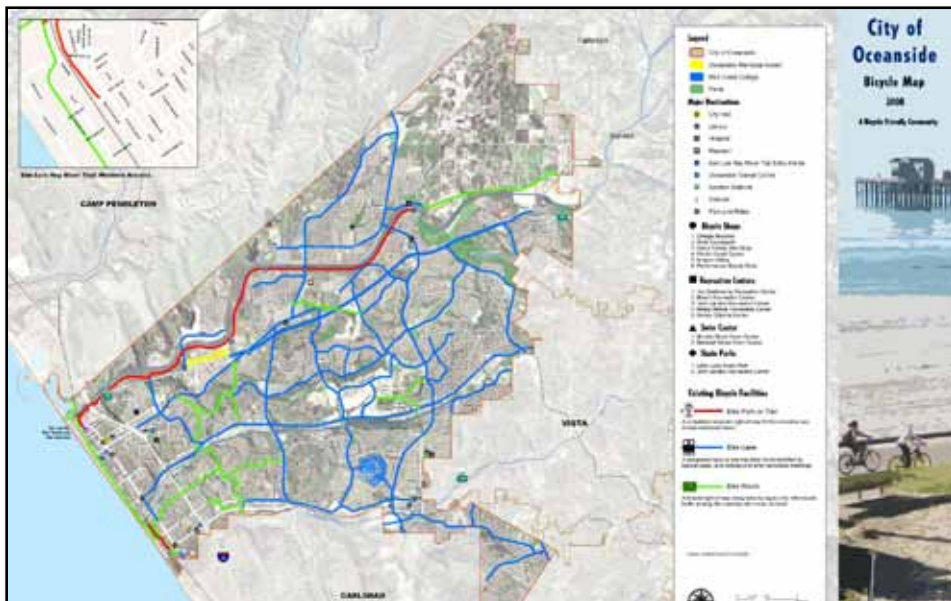
Parking

- Uptown Parking Study, San Diego
- Naval Station Great Lakes Traffic, Circulation and Parking Study, Waukegan, IL
- MCAS Yuma Circulation and Parking Study, Yuma, AZ

** Award Winning Project



Balboa Park Trails Map



City of Oceanside Bicycle Master Plan



KTU+A SERVICES

Planning

- Visioning
- Master Planning
- Site Planning
- Design Guidelines
- Workshop Facilitation

Resource Management

- GIS Analysis
- Visual Analysis
- LEED Analysis
- Land Management
- Water Management

Landscape Architecture

- Conceptual Design
- Construction Documentation
- Construction Administration

Technology

- 3-D Visualizations
- Renderings
- Photo Simulations
- Software Development

Established in 1970, KTU+A is a San Diego-based planning and landscape architecture firm whose commitment to balancing human activities with the elements of nature has resulted in award-winning, creative and sustainable projects throughout our community and the southwest.

Client Objectives

As our client, you can expect quality services that focus on your priorities and meet your deadlines and budgets. As your partner, our staff will provide planning and landscape architectural solutions that are creative, clearly communicated, and well executed.

Our Approach

- Collaborate toward a common vision to attain uncommon results.
- Seek solutions that capture the context of the place, preserve existing resources, and integrate the values of the users.
- Plan and design to inspire.
- Implement in a sustainable and cost effective manner.
- Evaluate and learn from our project experiences.

Knowledge and Experience We Bring to Your Project

The planning and design of a project requires an understanding of the regulations and requirements to protect the public's health safety and welfare; an understanding of the most innovative design technologies to meet current and future needs; an understanding of the needs and priorities of the users; and an understanding of the responsibilities of the client in terms of risk management, maintenance, future expansion opportunities and costs.

Principals

- Kurt Carlson, ASLA
- Mike Singleton, ASLA, AICP, LEED-AP
- Sharon Singleton, ASLA, CPSM
- Sandra Swaner-Carmona, AICP

Staff Resources - 32

- 10 Planners - 3 AICP
- 10 Landscape Architects - 2 LEED-AP, 1 AICP
- 3 Landscape Designers
- 2 Irrigation Designers
- 3 GIS Analysts
- 1 Graphic Designer
- 3 Administrators

Certifications

- Women Owned Small Business (Federal)
- Small Business (State of California)



Mobility

... balancing human activities with the elements of nature