

Parks & Recreation



In providing park design services, KTU+A has found that its client's needs are best met by helping them address the public's interests. The challenges in designing parks, open spaces, and trails are successfully addressed when local officials, designers, and community groups come together to create a balanced plan of infrastructure, community identity, site character, human activities, and nature. KTU+A is known for finding workable solutions to complex community interests, land development, and environmental challenges. Our award-winning designs emerge through careful consideration of the site's natural features, the needs of the community and our clients, and our commitment to stewardship of the land, resulting in projects that are safe, sustainable, and enjoyed.

- Regional Parks
- Community Parks
- Neighborhood Parks
- Waterfront Parks
- Playgrounds and Picnic Areas
- Sports Complexes
- Aquatic Facilities
- Interpretive and Visitor Centers
- Campgrounds
- Recreational Trails
- Golf Courses and Clubhouses
- Open Space



3916 Normal Street
San Diego, CA 92103
619 294-4477
www.ktua.com



Market Leader:
Cheri Blatner-Pifer, ASLA
cheri@ktua.com

Parks & Recreation

REGIONAL PARKS

- Fiesta Island Park Precise Plan, Mission Bay, San Diego
- Camp Lockett Historic Park Framework Management Plan, Campo
- Murrieta Creek Recreation Basin, Temecula
- Mojave River Forks Regional Park Master Plan, San Bernardino County
- Moabi Regional Park Master Plan, San Bernardino County
- Colton Regional Park Master Plan, Colton
- Girl Scout Facilities Master Plan, San Diego County

COMMUNITY PARKS

- Rincon Community Park, Valley Center
- Nobel Athletic Area and Library, San Diego**
- Salt Creek Community Park, Chula Vista
- Carmel Valley Community Park, San Diego
- Buena Vista Park Master Plan, Vista
- Porterville Community Park, Porterville
- Poway Park Master Plan Feasibility Study, Poway

WATERFRONT PARKS

- Coast Boulevard Park, La Jolla
- G Street Mole, San Diego

PLAYGROUNDS AND PICNIC AREAS

- Dos Picos Park Renovations, Ramona
- San Dieguito Park Renovations, Rancho Santa Fe
- Bonita Cove, Mission Bay, San Diego

** LEED Certified Project

NEIGHBORHOOD PARKS

- Cabrillo Heights Park, San Diego
- Sunshine Berardini Park General Development Plan, San Diego
- Breen Park, San Diego
- 39th Street Park General Development Plan, San Diego
- Collier Park, Ramona
- Lakeview Park, Discovery Hills, San Marcos
- La Mesita Park Master Plan, La Mesa
- Briercrest Park Master Plan, La Mesa
- Northmont Park, La Mesa
- Martin Luther King Park, San Diego
- Ocean View Hills Park, San Diego
- Trolley Barn Park, San Diego
- Southcreek Park, San Diego
- Ashley Falls Park, San Diego
- Sage Canyon Park, San Diego
- Torrey Highlands Park, San Diego
- Sabre Springs Park, San Diego
- Wildwood Park, Vista

INTERPRETIVE AND VISITOR CENTERS

- Mission Trails Regional Park Visitor and Interpretive Center, San Diego
- Kumeyaay-Ipai Interpretive Center, Poway
- Leo Carrillo Ranch Park, Carlsbad
- Piedras Pintadas Sacred Archaeological Site, San Dieguito River Park, San Diego
- Rancho Los Cerritos Visitor Center, Long Beach
- Palm Arboretum, Balboa Park, San Diego
- Palomar College Arboretum, San Marcos

AQUATIC FACILITIES

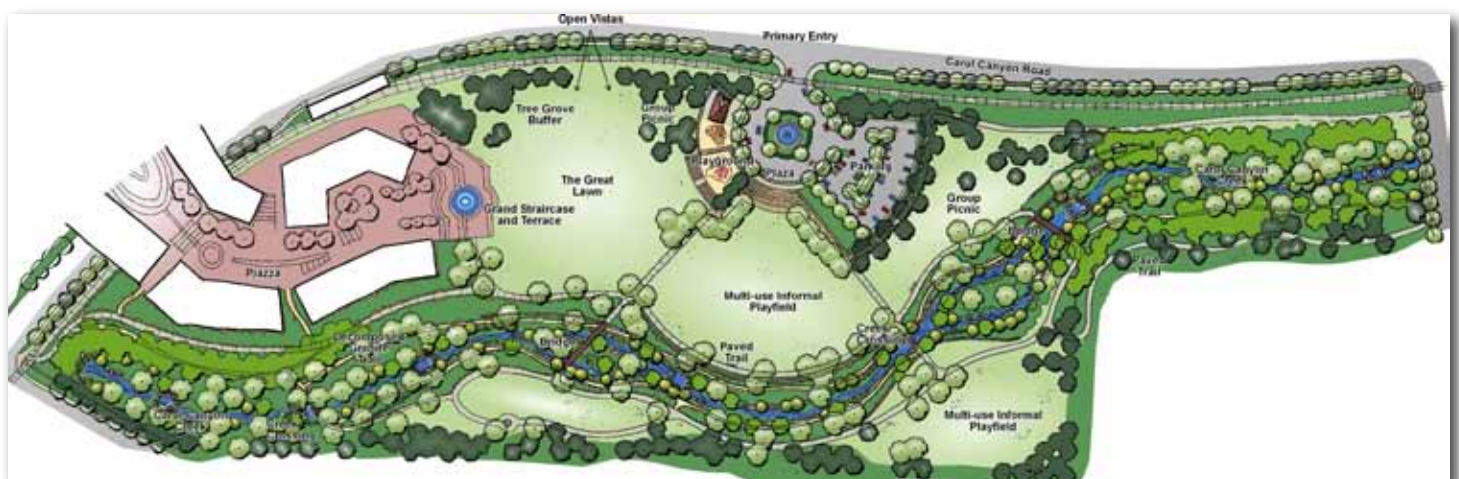
- Encanto Park Pool Study and Park General Development Plan, San Diego
- Mission Valley YMCA Pool, San Diego
- San Diego State University Aquaplex, San Diego

SPORTS COMPLEXES

- Mission Sports Park Expansion, San Marcos
- Cal State San Marcos Athletic Complex Master Plan, San Marcos
- San Diego State University Softball and Tennis Complex, San Diego
- Chargers Training Facility, San Diego
- Hickman Fields Renovation, San Diego
- University of San Diego Athletic Fields, San Diego
- UCSD North Campus Recreation Area, La Jolla
- UCSD East Campus Baseball Field, La Jolla
- Barnes Tennis Center, San Diego
- San Diego Racquet Club, San Diego



Colton Regional Park



Stone Creek Park Master Plan

Parks & Recreation

RECREATIONAL TRAILS

- Coast to Crest Trail, San Dieguito Lagoon Segment, San Diego
- Santa Ana River Trail, Phase 4, San Bernardino County
- Balboa Park Trails Signage and Mapping Plan, San Diego
- San Diego River Trails Gap Analysis, San Diego
- Ocean Beach Bike Trail, San Diego River, San Diego
- Bayshore Bikeway, San Diego
- Murrieta Creek Trail, Temecula
- Bernardo Mountain Trail Study, San Diego
- Heritage Trail, Valley Center
- Encinitas Beach Access Trails, Encinitas
- Roripaugh/Johnson Ranch Trails, Temecula
- Mockingbird Canyon Trail, Riverside
- Sea World Bike Path, Mission Bay, San Diego

GOLF COURSES AND CLUBHOUSES

- The Crossings at Carlsbad Golf Course, Carlsbad
- Torrey Pines Golf Course Clubhouse Renovations, San Diego
- Copper River Golf Course Clubhouse, Fresno
- The Vineyard Country Club, Escondido
- El Camino Country Club, Oceanside
- Grand Del Mar Golf Course Clubhouse, Del Mar

OPEN SPACE

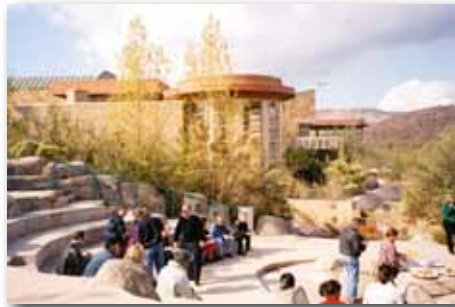
- San Dieguito Lagoon Restoration, San Diego
- Famosa Slough Enhancement Plan, San Diego
- Taylor Yard, Los Angeles



Carlsbad Golf Course

CAMPGROUNDS

- Santee Lakes Campground, Santee
- Fiesta Island Youth Campground, Mission Bay, San Diego
- Kumeyaay Campground, Mission Trails Regional Park



Mission Trails Regional Park



Balboa Park Trails Signage

Water Efficient Landscape

Ecology
The larvae and lush landscapes of Southern California's parks and gardens require more water than is locally available. Over-watering strains the water supply and can contribute to shortages for more critical uses.

There are several ways to reduce water use in the landscape. One is to use plant species that come from semi-arid environments. Ideally, use native plants which are adapted to the local dry ecosystem. Another water saving method is to use reclaimed water, which is water collected after its original use and treated but not fit for human consumption. Finally, proper irrigation run time and watering in the morning or at night also minimizes water loss due to evaporation.

History
Since the early 1900's, water has been imported across great distances to transform this dry desert region into an oasis. Population growth in Southern California continues to drive increasing water consumption.

Water for the City of Temecula is provided from several sources. The primary source is Lake Perris, built in the early 1970's as the southernmost State Water Project reservoir and part of the California Aqueduct system. Second, groundwater is pumped from local aquifers to supplement the imported water. Finally, local reservoirs and streams provide the remainder of our water.

Water Efficient and Non-Efficient Landscapes

Water Efficient Landscape: Shows a tree with roots and water being used efficiently. Labels include: Water Efficient Landscape, Non-Efficient Landscape, Water, Evaporation, Transpiration, Humidity, Rain, and Sea Level.

Non-Efficient Landscape: Shows a tree with roots and water being lost through evaporation and transpiration. Labels include: Non-Efficient Landscape, Water, Evaporation, Transpiration, Humidity, Rain, and Sea Level.

Recycled Water is generally obtained by purple fixtures.

Small easy leaves minimize transpiration water loss.

Improper spray head pressure can lead to water loss through misting.

The more efficiently we use water, the less water we need to import.

Murrieta Creek Trail

Murrieta Creek Trail Interpretive Signage



Coast Blvd. Park

KTU+A Departments

Planning

- Community Planning
- Mobility
- Resource Management

Federal Planning

- Master Plans
- MILCON Documentation
- Basic Facility Requirements
- Asset Evaluations
- Capital Improvement Plans
- Design Guidelines
- Special Studies

Landscape Architecture

- Public Spaces
- Parks and Recreation
- Health Care
- Education
- Housing
- Hospitality
- Office and Retail

Value Added Services

- Public Outreach
- GIS
- 3D Modeling and Simulations
- Sustainable Design
- Water Management
- Grant Writing

Parks & Recreation



Planning + Landscape Architecture

Established in 1970, KTU+A is a San Diego-based planning and landscape architecture firm whose commitment to balancing human activities with the elements of nature has resulted in award-winning, creative and sustainable projects throughout our community and the southwest.

Client Objectives

As our client, you can expect quality services that focus on your priorities and meet your deadlines and budgets. As your partner, our staff will provide planning and design solutions that are creative, clearly communicated, and well executed.

Our Approach

- Collaborate toward a common vision to attain uncommon results.
- Seek solutions that capture the context of the place, preserve existing resources, and integrate the values of the users.
- Shape the intersection of people and place.
- Implement in a sustainable and cost effective manner.
- Evaluate and learn from our project experiences.

Knowledge and Experience We Bring to Your Project

The planning and design of a project requires an understanding of the regulations and requirements to protect the public's health safety and welfare; an understanding of the most innovative design technologies to meet current and future needs; an understanding of the needs and priorities of the users; and an understanding of the responsibilities of the client in terms of risk management, maintenance, future expansion opportunities and costs. KTU+A takes these responsibilities seriously and strategizes with our clients and the consultant team to ensure the project meets and exceeds its goals and objectives.

Principals

- Sandra Swaner-Carmona, AICP
- Sharon Singleton, ASLA, CPSM
- Kurt Carlson, ASLA
- Mike Singleton, ASLA, AICP CTP, LEED-AP

Staff Resources/Licenses/Certifications - 32

- 10 Planners (4 AICP)
- 9 Landscape Architects (9 California and 2 Nevada; 2 LEED AP; 1 LEED Green Associate; 1 AICP Certified Transportation Planner)
- 4 Landscape Designers
- 2 Irrigation Designers (1 Irrigation Association Certified Irrigation Designer)
- 3 GIS Analysts
- 1 Graphic Designer
- 3 Administrators

Business Certifications

- Women Owned Small Business (Federal)
- Small Business (State of California)



... balancing human activities with the elements of nature